

# S725TX

## MINI SKID STEER



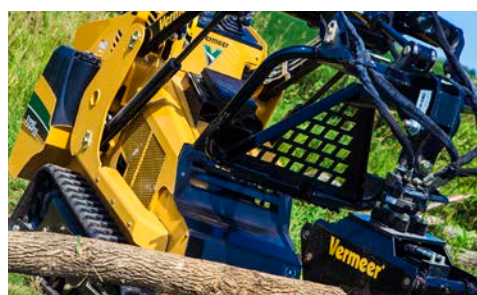
**EFFICIENCY AND PRODUCTIVITY ARE NOW MADE EASY** with a single pilot-operated ground drive joystick, which allows for a smooth range of motion. Additionally, a conveniently placed auxiliary lever by the loader arm controls, allows operators to multitask.



**THE NARROW FOOTPRINT** enhances maneuverability and access through narrow spaces such as backyard gates. Choose between 7" (17.8 cm) or 9" (22.9 cm) wide tracks.



**ISO-RATED OPERATING CAPACITY** for the S725TX is 750 lbs (340.2 kg). With a rated tipping load of 2145 lbs (973 kg), this small footprint machine positions itself as an exceptional mini skid steer. Additionally, the S725TX leads the industry with a lift height (to hinge pin) of 84.5" (214.6 cm).



**A DUAL HYDRAULIC AUXILIARY** option adds a second dedicated low-flow hydraulic circuit to optimize operator efficiency when powering attachments.



**LOWER YOUR COST OF OPERATION** with a high mounted track sprocket. The higher mounting reduces premature wear and tear in rocky soil conditions, while the ADI cast sprocket is heat-treated for longer life.



**A DEDICATED SPRING-CUSHIONED PLATFORM** keeps the operator out of the mud. The integrated operator presence system suspends ground drive and powered boom/bucket motion when the operator steps off the platform.



**VERMEER.COM**



**EQUIPPED TO  
DO MORE.™**

# S725TX MINI SKID STEER

## GENERAL

Length: 84" (213.4 cm)

Width: 36" (91.4 cm)

Height: 57" (144.8 cm)

Weight: 2880 lbs (1306.3 kg)

Hinge pin height: 84.5" (214.6 cm)

Ground clearance: 6" (15.2 cm)

## ENGINE

Make/Model: Kubota V1505-E4B

Gross horsepower: 24.8 hp (18.5 kW)

Torque (max): 67.8 ft-lb (91.9 Nm)

Displacement: 91.41 cu in (1.5 L)

Fuel type: Diesel

Fuel tank capacity: 14.5 gal (54.9 L)

Number of cylinders: 4

Cooling medium: Liquid

Max engine operating angle: 30 degrees

## PERFORMANCE

SAE-rated operating capacity: 750 lb (340.2 kg)

Tipping load [with 175 lb (79.4 kg) operator]: 2145 lb (973 kg)

Max forward travel speed: 4.5 mph (7.2 km/h)

## HYDRAULIC SYSTEM

Hydraulic tank capacity: 11.5 gal (43.5 L)

Hydraulic system capacity: 14.5 gal (54.9 L)

Auxiliary pump high flow: 13.5 gpm (51.1 L/min)

Auxiliary pump low flow: 8.5 gpm (32.2 L/min)

Auxiliary pump relief: 2950 psi (203.4 bar)

Ground drive pump relief: 3625 psi (1644.3 bar)

Fittings: Quick coupler

## OPERATIONAL/ELECTRICAL

Steering: Single pilot-operated joystick

Lift and curl: Single dual-axis

Auxiliary electrical power port

## SAFETY

Operator presence system

Lift arm cylinder lock

Hydraulic parking brake

## OPTIONS

Dual auxiliary hydraulic circuits

Track width: 7" (17.8 cm) or 9" (22.9 cm)

Extended warranty

Special paint

Planned maintenance

Confidence Plus® Asset Protection Program

**NOTES:**

---

---

---

---